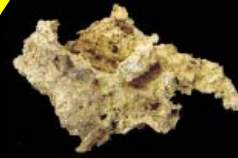




Dime Yukon Gold Property



The Dime Gold Property is the most promising of all for Stina. Optioned from Ryanwood Exploration, the Dime contains part of a former Teck target in the red hot Ten Mile Creek area, and is the main focus of the company.

Location

The Dime property (308 claims over 61 sq km) is located 75 miles south of Dawson City, YT, 42 km northwest of Kinross's (formerly Underworld's) White Gold project and covers a well-known placer gold creek called Ten Mile. Ten Mile creek has produced coarse placer gold since the turn of the century and the placer deposits are believed to be locally derived.

Property History

In 1998 Teck Corp. staked the ground surrounding two placer gold districts in the Dawson area. One was the area now covered by Underworld's White Gold property and the second one was a claim package in the Ten Mile Creek area. Teck worked on both properties for two or three seasons and successfully identified several promising targets; however, the company changed its focus in 2000 and dropped all their gold exploration efforts in the Dawson area.

Dawson City prospector Shawn Ryan understood the significance of Teck regional exploration work and staked the Dime claims to cover a large co-incident gold and arsenic soil anomaly that was never followed up. Teck's data shows that there is a broad anomalous zone up to 750 metres wide that and 1,200 metres in length and the anomaly appears to be open along strike over top of the Dime claims south boundary. Stina is now in the process of expediting this exciting new gold property.

DIME PROPERTY HIGHLIGHTS

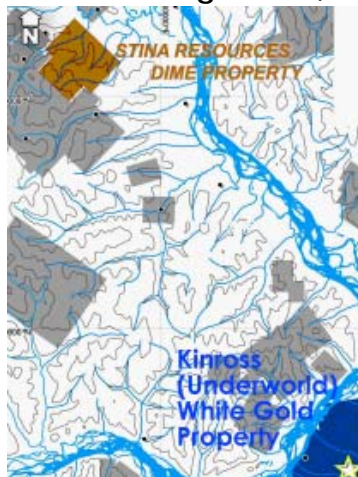
- 3 Large Soil Anomalies extending over 4.5km, soil sampled and trenched
- Over 500 metres of core drilling on two of the anomalies
- Soil samples confirm a target with arsenic values as high as 6,082 ppb

2009 Soil Sampling

The 2009 soil sample program (191 soils and 10 duplicates) confirmed the anomalous gold results on the Dime claim block from earlier soil sampling programs by Teck Exploration in 1998 to 2000 and Fjordland Exploration in the early 2000s.

A prominent east-west belt of very high gold values with most samples ranging from 25 parts per billion to 256 ppb across the 700-metre grid length was identified, and the width ranged from 100 to 150 metres. The east and west ends, and parts of the north and southwest grid limits of the anomaly belt were open. Additionally, south of the east-west anomaly another cluster of contiguous samples carrying a span of elevated gold values. This area was 300 metres wide and up to 300 metres long in the north-south direction, and the **highest arsenic value of 765 ppm occurs with the highest gold value of 6,082 ppb.**

Dime Gold Property Dawson Mining District, YT



There has been insufficient exploration to define a mineral resource on the Dime property, and it is uncertain as to whether, or not, further exploration will result in the discovery of a mineral resource on the property. We seek Safe Harbor.

2010 Soils and Trenching

In July and August 2010 an expansive soil and trench program was undertaken (2,600 soil samples, 247 bulk rock samples and 7 trenches). The 2010 grid is an extension of the original smaller grid on the western side of the property completed in 2009. The soil anomaly now extends over **4.5 kilometres in an east-west direction and consists of three separate soil anomalies.**

Western anomaly: First reported by Teck Corp., measures approximately 1.3 km long by 750 metres wide, has a general east-west trend and includes values up to 578 parts per million arsenic and 6,092 parts per billion gold;

Central anomaly: 1.6 km long by 350 m wide area of anomalous gold (up to 147 ppb Au), arsenic (values up to 1,975 ppm As) and weaker lead in soil values (up to 49 ppm Pb). This anomaly is offset to the north from the western and eastern anomalies:

Eastern anomaly: This anomaly measures 1.8 km long by up to 900 m wide and consists of an Au (values up to 894 ppb Au), As (values up to 1,070 ppm As) and Pb (values up to 167 ppm Pb) geochemical signature.

Preliminary interpretation relates the soil geochemical anomalies to east-west- and north-northwest-trending magnetic anomalies. There appears to be left-lateral offsets on the north-northwest-trending magnetic anomalies.

2010 Core Drilling

In September 2010 Stina drilled a total of 5 core holes on the Dime (over 500m). Four on the western anomaly over trenches 2 and 4, and approximately 200 metres north of a 6,082-part-per-billion gold-in-soil anomaly. One additional hole was drilled over trench 7 which returned an assay of 1,490 ppb Au over five metres. In this zone, anomalous areas are underlain by strongly oxidized metasedimentary rocks with abundant iron oxide, manganese staining and oxidized pyrite. Kluane Drilling Co. of Whitehorse conducted the drilling and Stina awaits results from ACME Laboratories.

CONTACT

Stina Resources Ltd.

Suite 717, 165 LaRose Ave.
Etobicoke, ON M9P 3S9, Canada
Tel (toll-free): 800 545 9940
Tel (Toronto): 416 368 2271
E-mail: info@stinaresources.com
Website: www.stinaresources.com